

*geoliner*® 670



Wheel alignment  
in 3 dimensions

## geoliner® 670

Wheel alignment in 3 dimensions

The 3D wheel aligners of the *geoliner* series use the latest camera and computer technologies which have the added benefit of high accuracy and impressive speed. Furthermore maintenance of the equipment is reduced to a minimum as the sensitive measurement technique is at a safe distance from the vehicle where mechanical adjustment procedures always are a potential source of danger.

During 3D measurement the cameras detect the target positions in the three-dimensional space. The special Pro 32 software is extremely easy to operate; a few training lectures are enough for the user to properly handle the 3D aligner. With its intuitive features the software mostly prevents mistakes from user's end as it signals at once whenever an obvious mistake has been made.

The geoliner 670 is available with fixed support(s) or a movable camera beam (lift) to suit individual workshop requirements.

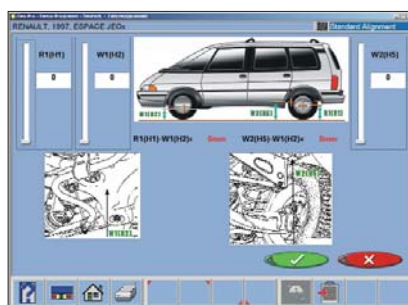
The extensive service network and dedicated training centre guarantee a professional technical back-up, from initial product training right through to after-sales service and support.

### Saves time



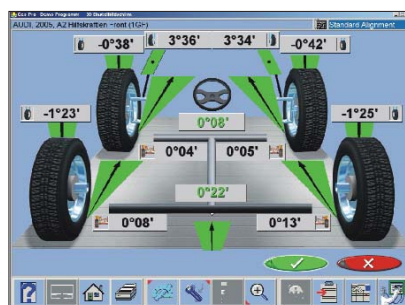
Once the four targets are fitted on the wheels, the complete alignment readings are available within seconds. This allows to carry out more alignments a day – and your investment pays off within short.

### Up-to-date OEM vehicle specs



Complete vehicle specs and vehicle-related information assists the user even when handling less conventional vehicle types. The specs of more than 25,000 car models of the past 25 years are all at user's disposal.

### 3D measurement screen



All data measured is shown in a conspicuous 3D graphics to allow easy overall diagnostics.

### Standard equipment

- 2 short supports (pit version)
- or 2 tall supports (work level 1.2 m high)
- or camera beam left / right with camera system
- PC with user software, vehicle specs, Windows operating system, mouse pad, HDD, DVD and floppy drive
- Mobile cabinet with 17" monitor
- A4 colour printer complete with data lead and power cord
- Loud-speaker and IR remote control
- Steering wheel holder and brake pedal lock
- Wheel clamps 11" – 22" with front targets (1 LH, 1 RH)
- Wheel clamps 11" – 22" with rear targets (1 LH, 1 RH)

**Snap-on® Equipment**

#### France

Snap-on Equipment France  
Za du Vert Galant · 15, rue de la Guvernone BP 7175 · 95310 Saint-Ouen-L'Aumône  
Tel: +33 (0) 134/48 58-78 · Fax: +33 (0) 134/48 58-70 · [www.snapon-equipment.fr](http://www.snapon-equipment.fr)

#### Germany

Snap-on Equipment GmbH  
Werner-von-Siemens-Str. 2 · 64319 Pfungstadt  
Tel: +49 (0) 6157/12-0 · Fax: +49 (0) 6157/12-286 · [www.snapon-equipment.de](http://www.snapon-equipment.de)

#### Italy

Snap-on Equipment s.r.l.  
Via Prov. Carpi, 33 · 42015 Correggio (RE)  
Tel: +39 0522/733-411 · Fax: +39 0522/733-410 · [www.snapon-equipment.it](http://www.snapon-equipment.it)

#### United Kingdom

Snap-on Equipment Ltd.  
48 Sutton Park Avenue · Reading RG6 1AZ  
Tel: +44 (0) 118/929-6811 · Fax: +44 (0) 118/966-4369 · [www.hofmann.co.uk](http://www.hofmann.co.uk)

#### Export - Europe, Middle East, Africa

Snap-on Equipment s.r.l.  
Via Prov. Carpi, 33 · 42015 Correggio (RE)  
Tel: +39 0522/733-483 · Fax: +39 0522/733-479 · [www.hofmann-ge.com](http://www.hofmann-ge.com)